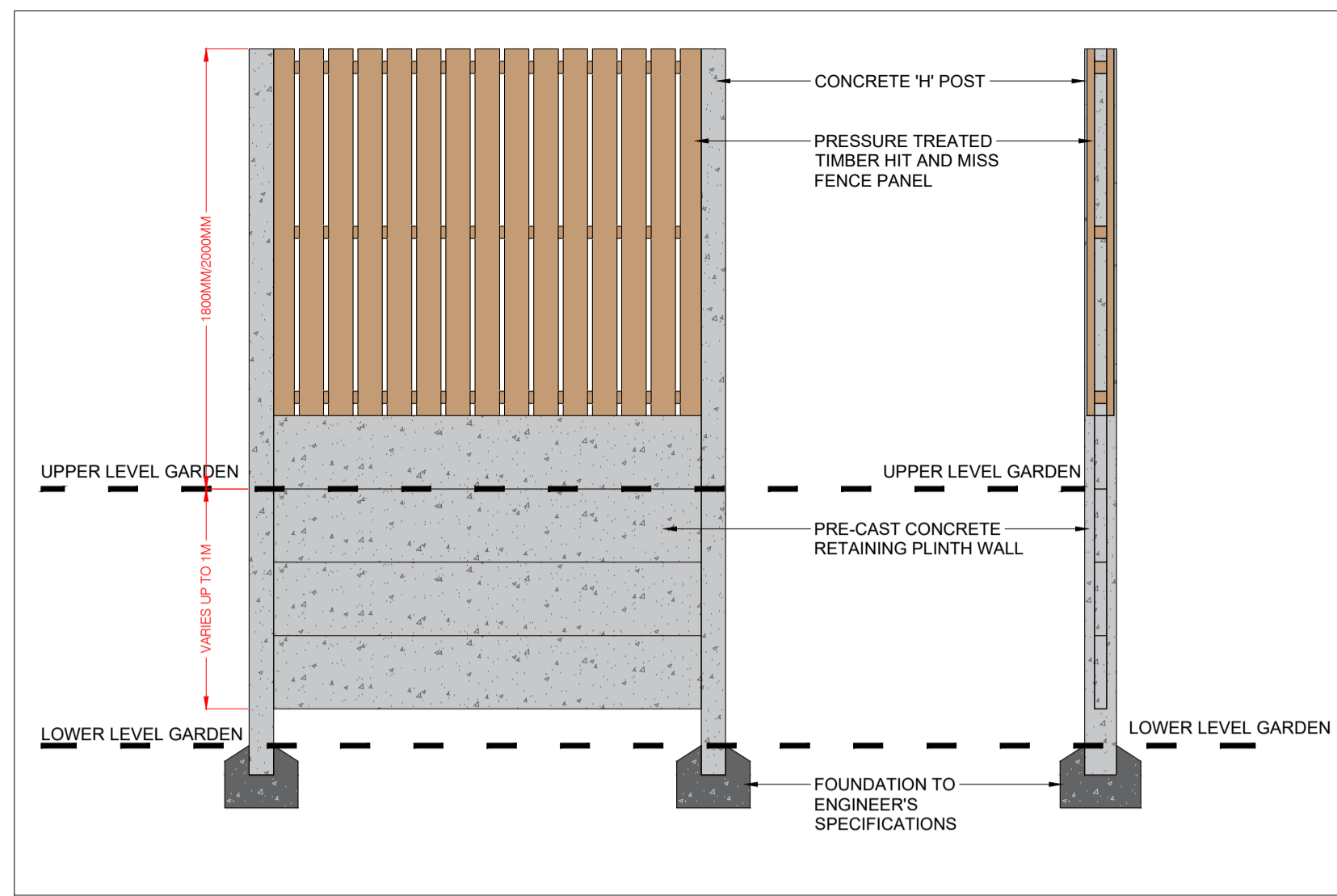
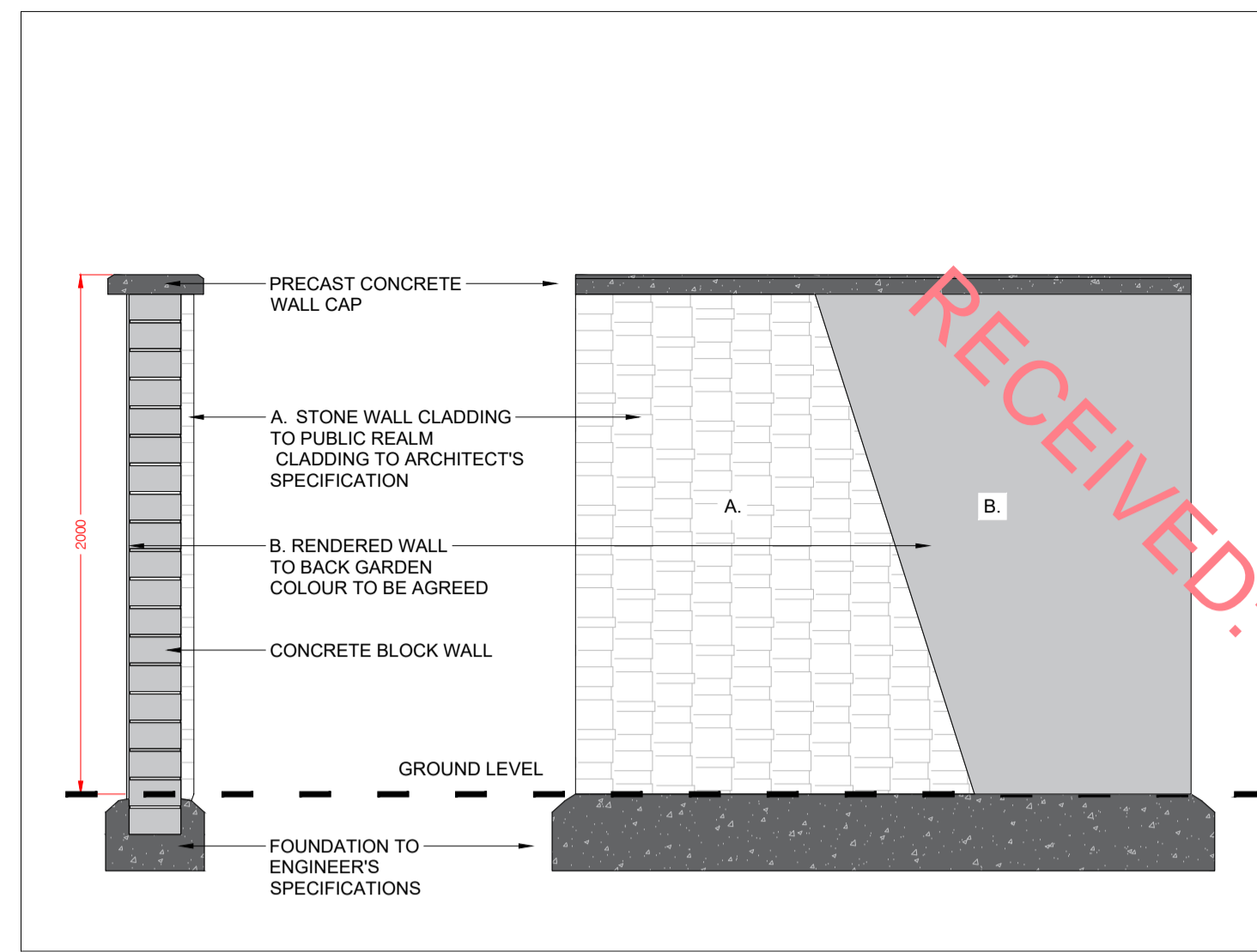


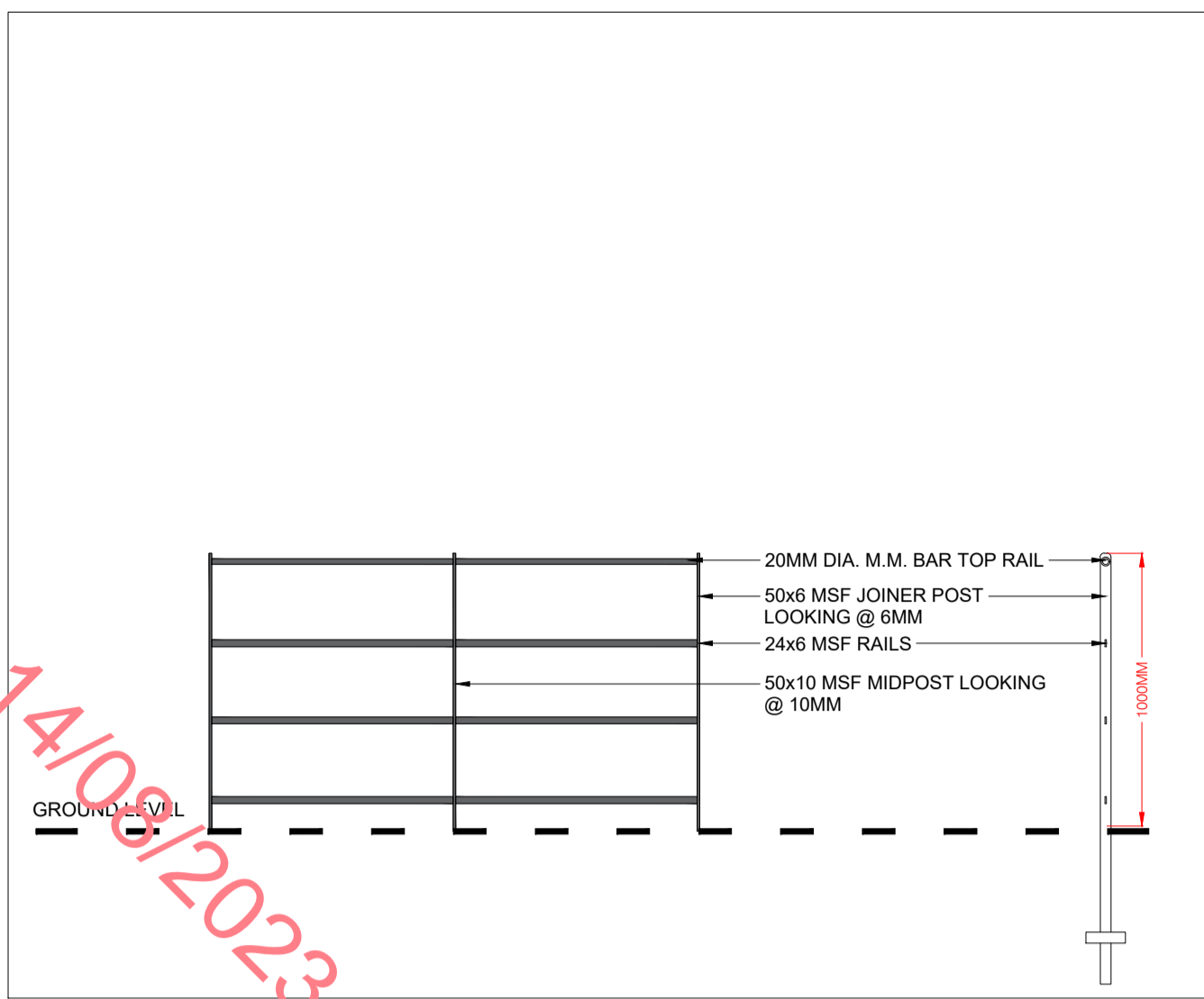
DETAIL B01 - CONCRETE POST AND TIMBER PANEL FENCE 1.8M/2M HIGH
SCALE 1:25@A1



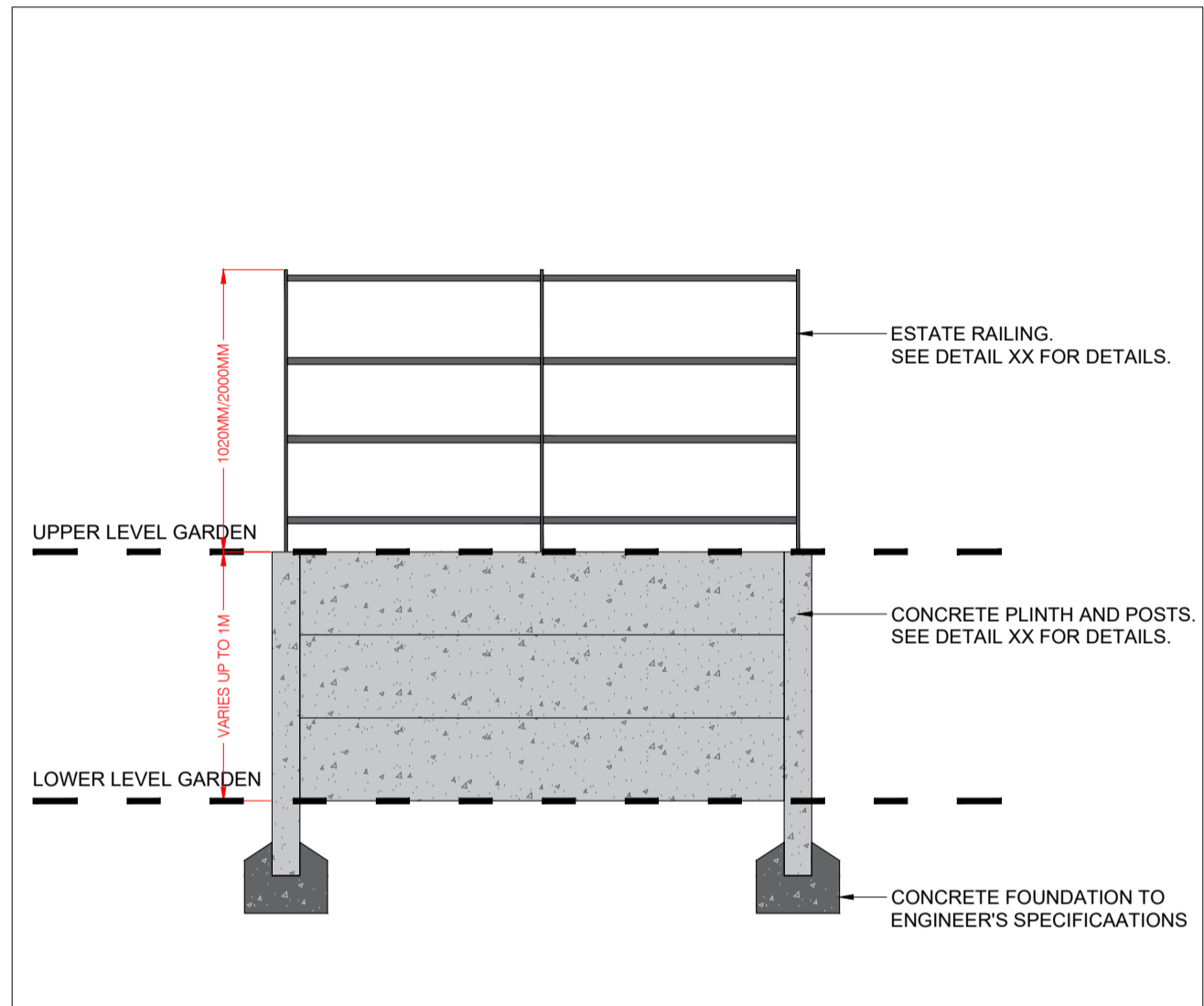
DETAIL B02 - CONCRETE POST AND TIMBER PANEL FENCE 1.8M/2M HIGH WITH CONCRETE PLINTH RETAINING WALL
SCALE 1:25@A1



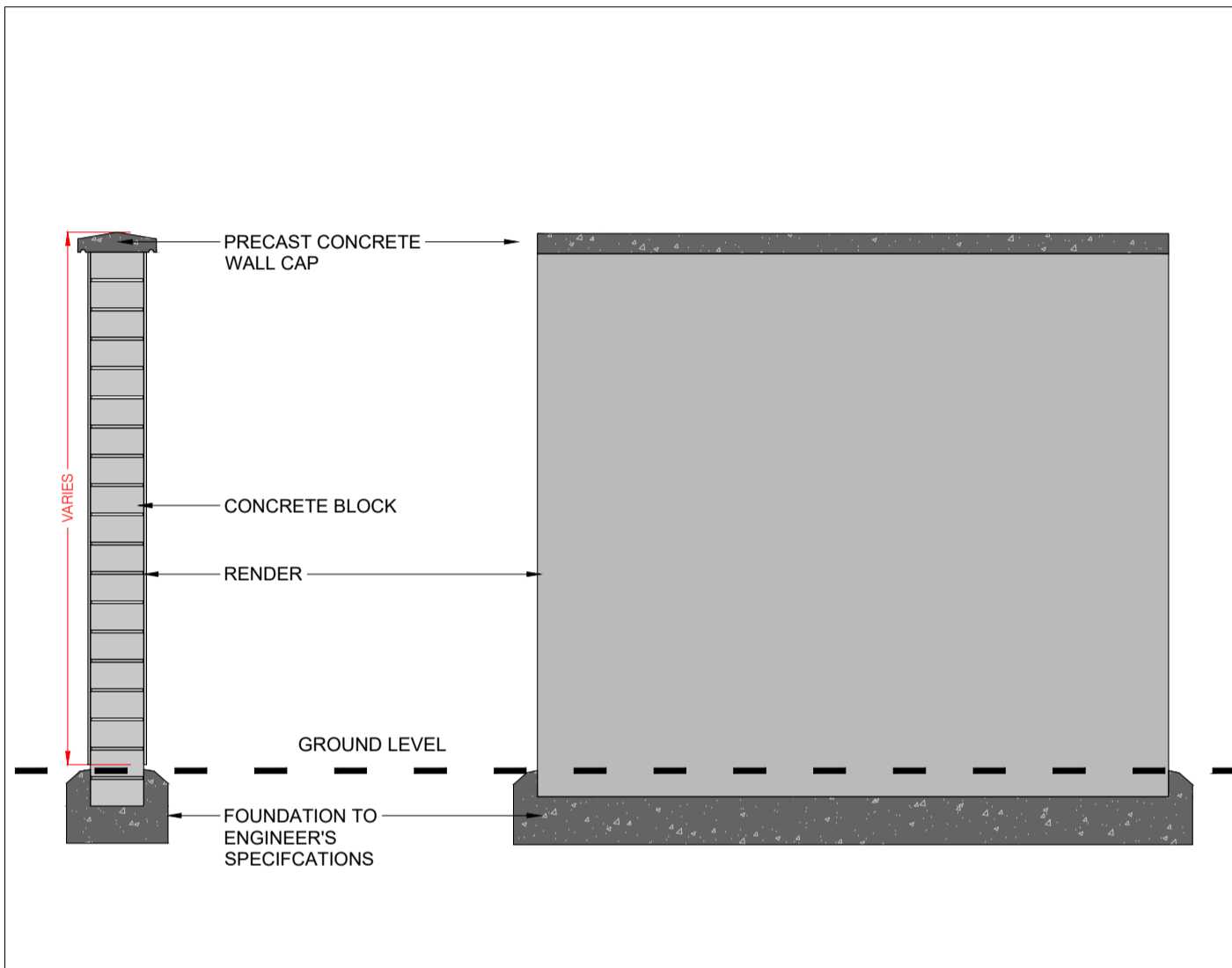
DETAIL B03 - 2M HIGH STONE FACED CONCRETE BLOCK WALL WITH CONCRETE CAPPING
SCALE 1:25@A1



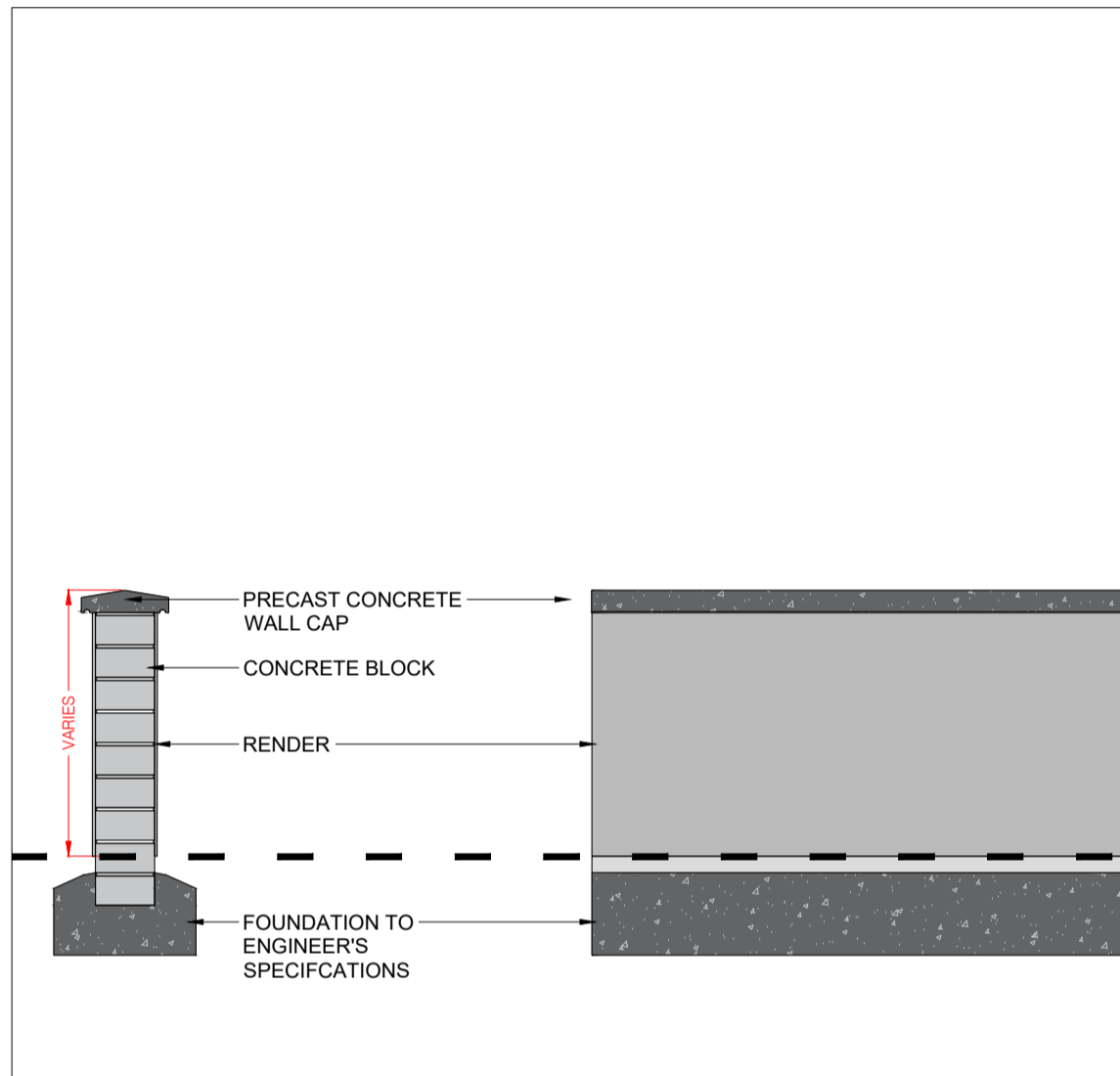
DETAIL B04 - ESTATE RAILING
SCALE 1:25@A1



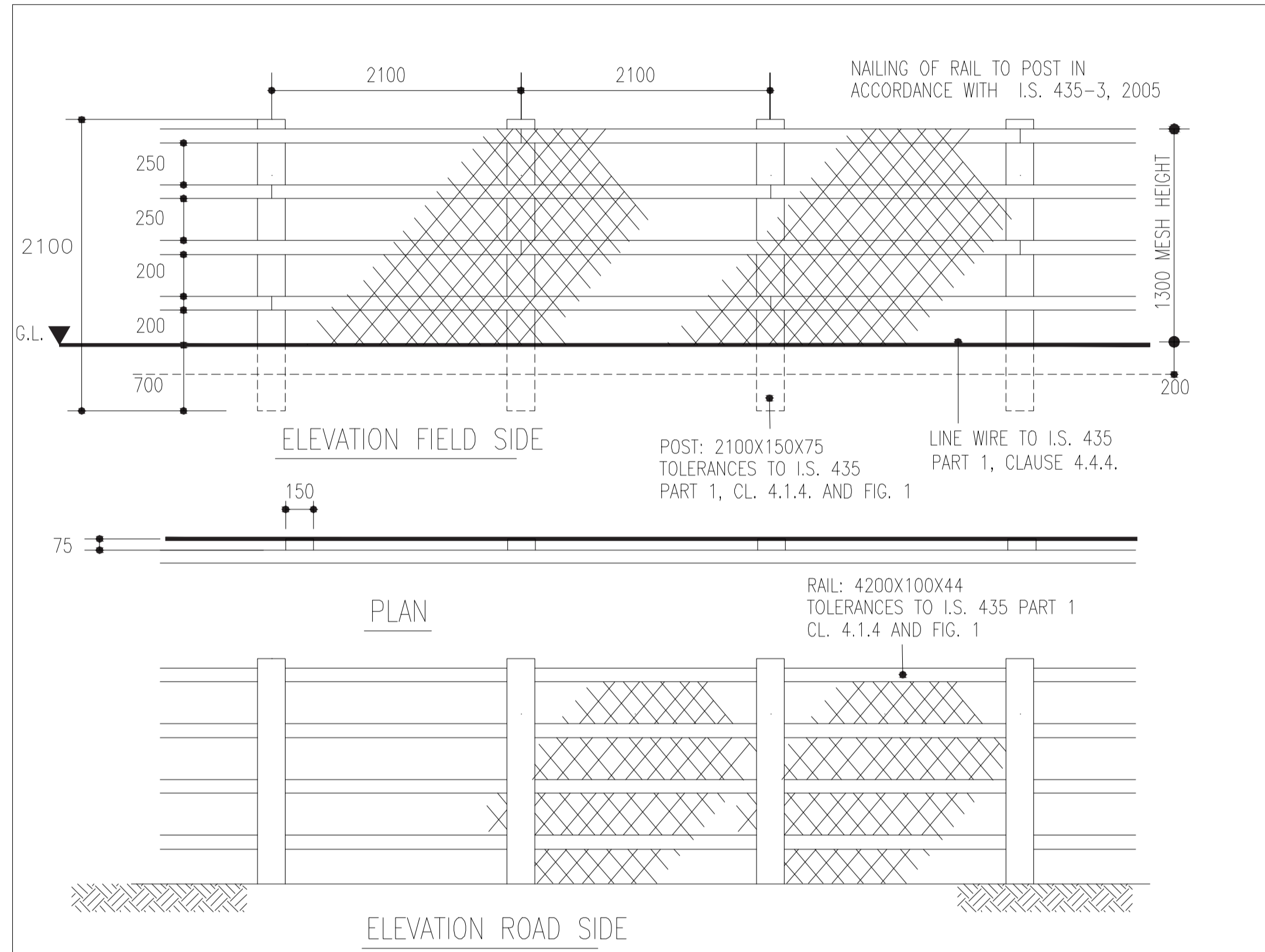
DETAIL B05 - ESTATE RAILING ON CONCRETE PLINTH WALL
SCALE 1:25@A1



DETAIL B06 - RENDERED BLOCK WALL
SCALE 1:25@A1



DETAIL B07 - LOW RENDERED BLOCK WALL
SCALE 1:25@A1



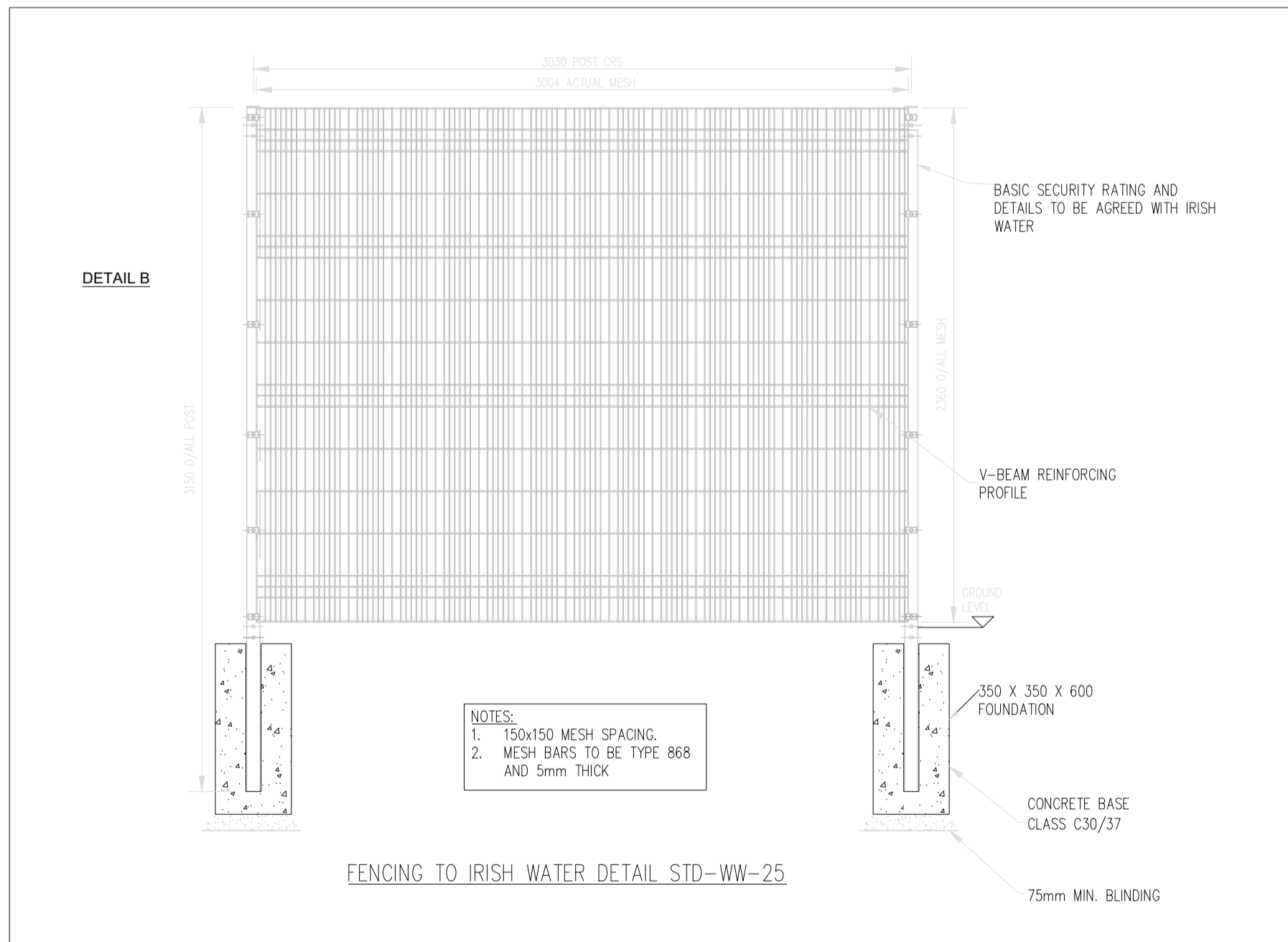
FIXING.

FIXING IN ACCORDANCE WITH I.S. 435-3:2005, NOTES 13 AND 14 AND SECTION 4.4 OF I.S. 435-1, 2005

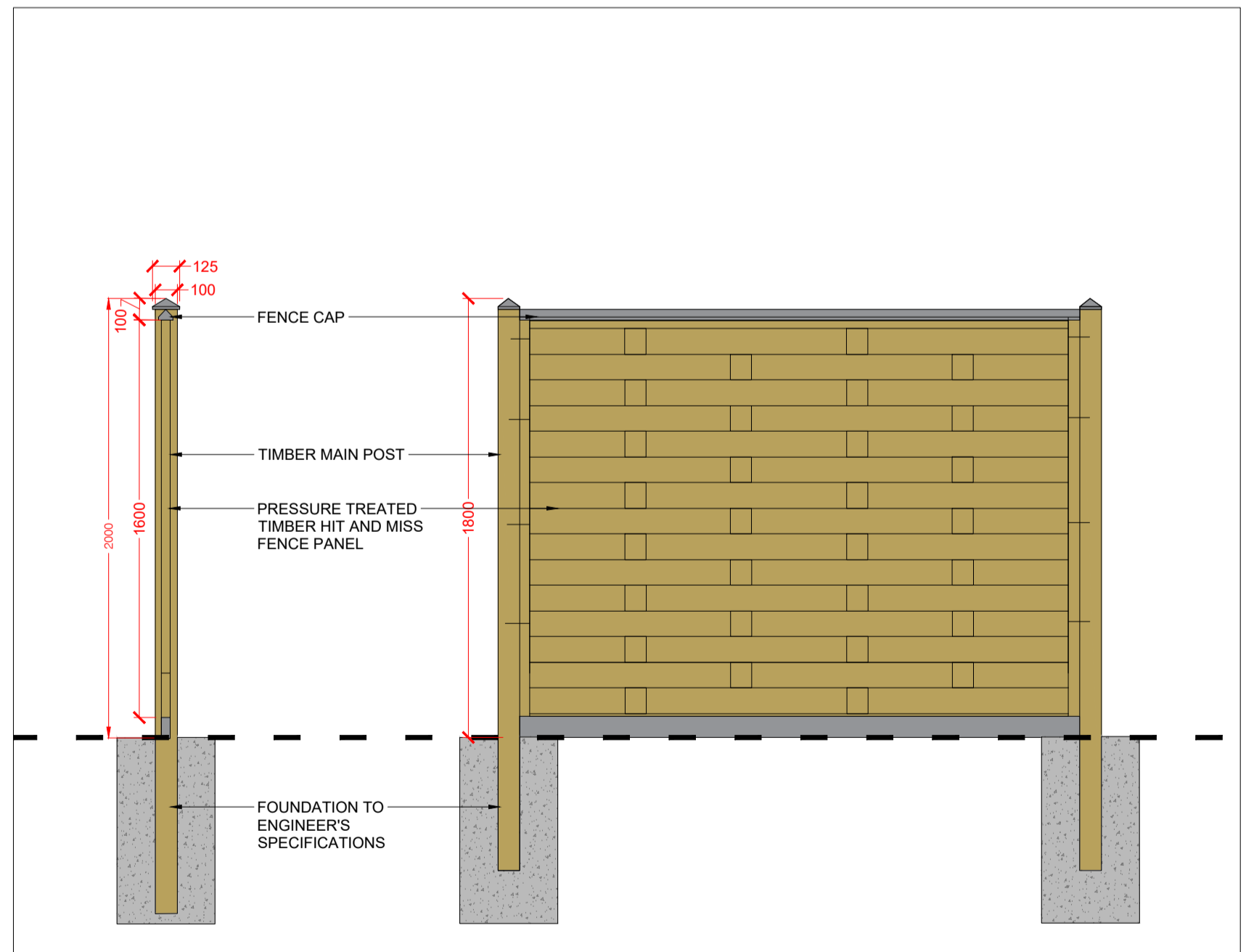
NOTES B:

CHAINLINK MESH SHALL BE 1300mm WIDE, 50mm MESH MADE OF 2.25/3.15mm DIAM. PLASTIC COATED GALVANISED MILD MESH STEEL WIRE TO IS EN 10223-6.

DETAIL B10 - TIMBER POST AND RAIL FENCE WITH WIRE MESH - DETAIL COURTESY OF CS CONSULTING ENGINEERS
SCALE 1:25@A1



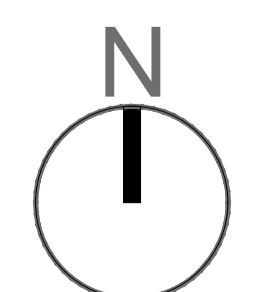
DETAIL B08 - 2.4M HIGH WIRE MESH FENCE - DETAIL COURTESY OF CS CONSULTING ENGINEERS
SCALE 1:25@A1



DETAIL B09 - 2M HIGH TIMBER PANEL FENCE WITH TIMBER POSTS
SCALE 1:25@A1

DO NOT SCALE FROM THIS DRAWING. WORK ONLY FROM FIGURED DIMENSIONS ALL ERRORS AND OMISSIONS ARE TO BE REPORTED TO LANDSCAPE ARCHITECT

REV.	DATE	REFERENCE	BY	REV.	DATE	REFERENCE	BY
A	2023-07-31	BOUNDARY DETAILS	RMCD				



MURPHY+SHEANON
Horticulture & Landscape Architecture

Contact : colum@murphysheanon.ie
Tel : +353860787147
Address : 2Richmond Lodge, Richmond Green, Carrickbrennan Road, Monkstown, Dublin .18

CLIENT: KELDRUM LTD.	DRAWING NUMBER: 426-PD-08.1
PROJECT: TINAKILLY TWO, RATHNEW, CO. WICKLOW	PROJECT NUMBER: 426
TITLE: BOUNDARY DETAILS	PROJECT STATUS: PLANNING
SCALE: AS SHOWN/A1	SHEET NO: REV. A
DRAWN BY: RMCD	CHECKED BY: KR/CS
CAD FILE REFERENCE: g:\shared drives\murphy sheanon office\m+s_office\jobs\211426 - tinakilly part b - ardale\m+s12. planning\rm copy - 22-426-pd-01_31.07.23.dwg	